

Free Range Cables Cowl

By Jane Leuchter



I found this yarn on a family vacation and thought for a long while about what to make with it. I love the way garter stitch shows off the colorway and the way the cable travels down the side to add a bit of intrigue. I've always wanted to make a triangular cowl, and this is the perfect cozy piece to welcome fall!

Materials

- Yarn:** Approx. 550 yards (210 grams) DK weight yarn
I used: Blue Moon Fiber Arts Single Silky Targhee in Free Range Chickens
- Needles:** Size 7 (4.5 mm) circular needles, or size needed to obtain gauge,
cable needle, tapestry needle
- Gauge:** 20 stitches and 36 rows = 4" in garter stitch, blocked
Note that gauge is not crucial for this project but will affect the final size.

Directions

Setup:

Cast On 4 stitches

Row 1 (RS): kfbf, sl3wyib

Row 2 (WS): p3, k3

Row 3: sl1wyib, k1, m1r, k1, m1l, sl3wyib

Row 4: p3, k to end of row

Row 5: sl1wyib, k1, m1r, k to last 4 stitches, kfb, sl3wyib

Row 6: p3, k to end of row



Section 1:

Row 1 (RS): sl1wyif, k1, m1r, k to last 4 stitches, kfb, sl3wyib

Row 2 (WS): p3, k to end of row

Repeat rows 1 & 2 12 more times. The piece will be approx. 3" from CO edge (32 sts on needle)

Cable Increase Section:

Follow chart 1, keeping in mind that the first edge stitch (slipped stitch) is not included in the chart. The cable repeat is edged by 1 reverse stockinette stitch on each side (these are included in the chart).

Note on the chart: the grey lines running down the sides of both charts identify the cable pattern itself, and the horizontal lines identify the pattern repeats. The marker is placed after row 27, at the very edge of the chart (3 stitches in on the first line of the chart).

Note on increases: I used two different types of increases on the cable side for this section, depending on how the rest of the pattern will go. My general idea was: if the next row requires stockinette, I used M1R to create a knit stitch. If the next row requires reverse stockinette, I used M1PW to create a purl stitch.

Set up row (Row 1 of chart): sl1wyif, p1, m1r, p1, place marker, k to last 4 stitches, kfb, sl3wyib

RS Rows: sl1wyif, follow cable chart to marker, k to last 4 stitches, kfb, sl3wyib

WS Rows: p3, k to marker, follow cable chart to last stitch, k1

Repeat these until you reach the end of Chart 1 (48 rows total).

Cable Pattern Section:

Follow chart 2, keeping in mind that the first 3 stitches (i-cord edge) are not included in the chart.

Note on the chart: the grey lines running down the sides of both charts identify the cable pattern itself. The marker is placed after row 27, at the very edge of the chart.

On the first row, kfbf into the first stitch (edge stitch) to start the i-cord edge, then follow the rest of the RS row instructions.

RS row: k3 (i-cord edge), follow cable chart until marker, k to last 4 stitches, kfb, sl3wyib
WS row: p3, k to marker, follow cable chart to last 3 stitches, sl3wyif

Knit 8 repeats of the cable chart, continuing to increase at the end of each RS row (following instructions above). This section will have an i-cord edge on both sides.

Decrease Section:

In this section, you will be decreasing at the end of each RS row.

RS row: k3 (i-cord edge), follow cable chart until marker, K to last 3 stitches, k2tog, k1

WS row: sl1wyif, k to marker, follow cable chart to last 3 stitches, sl3wyif

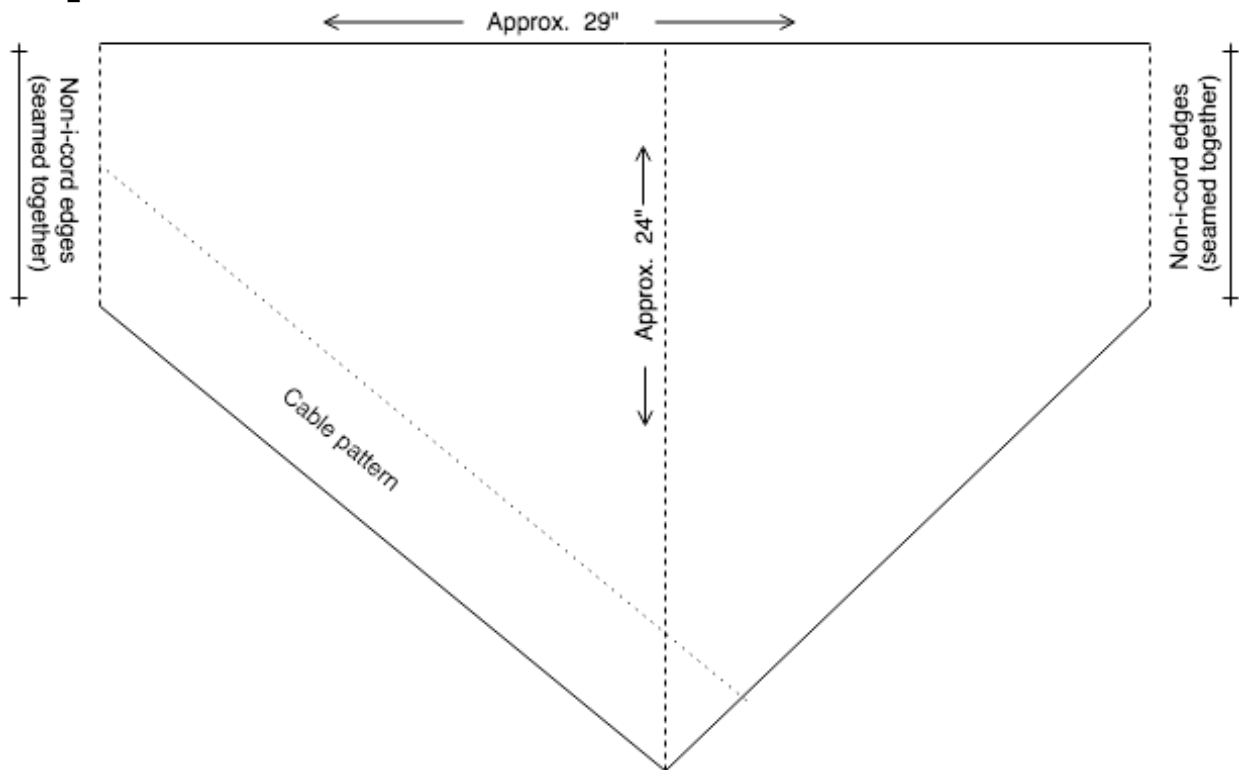
Knit 5 pattern repeats of the decrease section, decreasing at the end of each RS row (following the instructions above) This section will have i-cord on only one edge (the cable side).

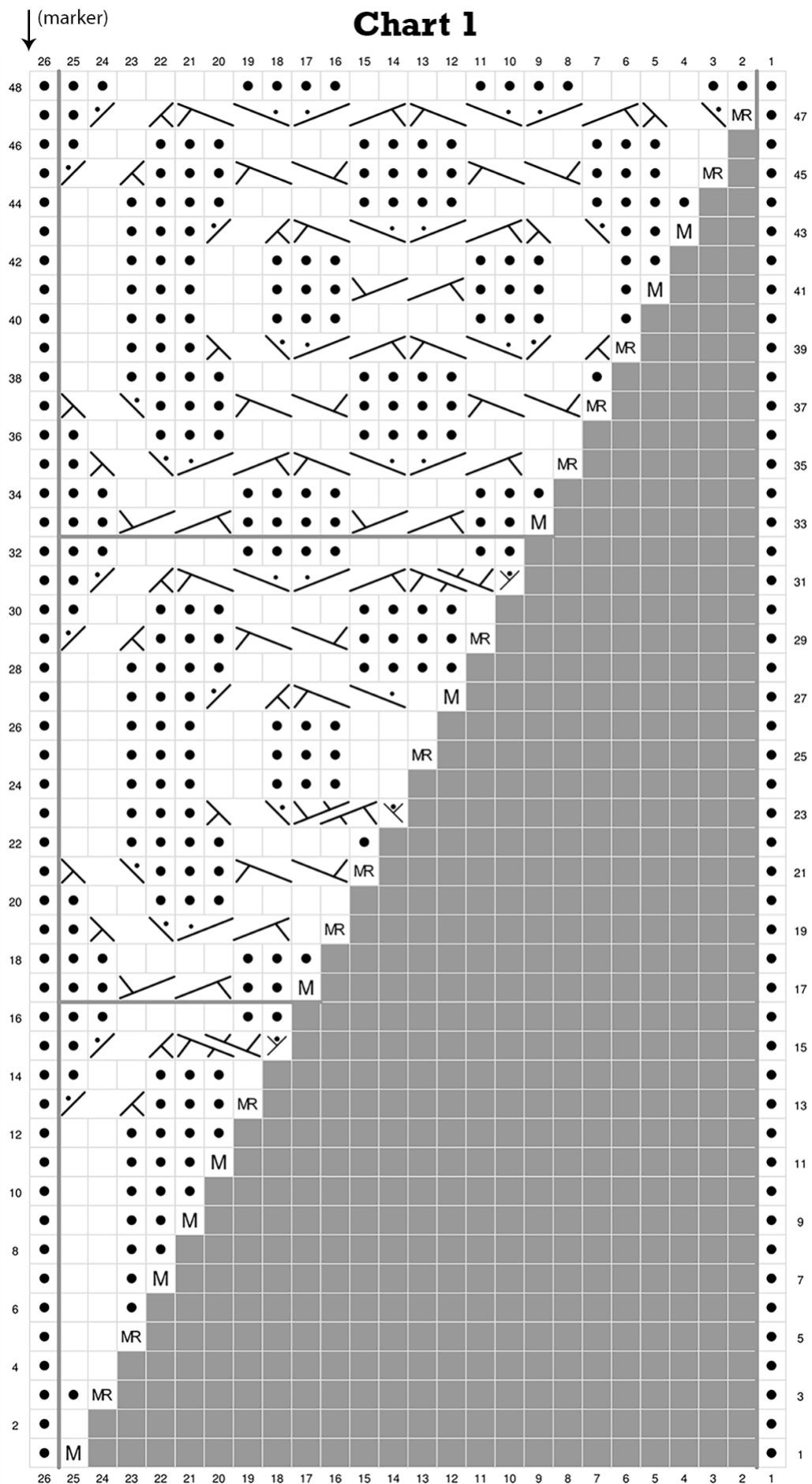
I-cord bind off:

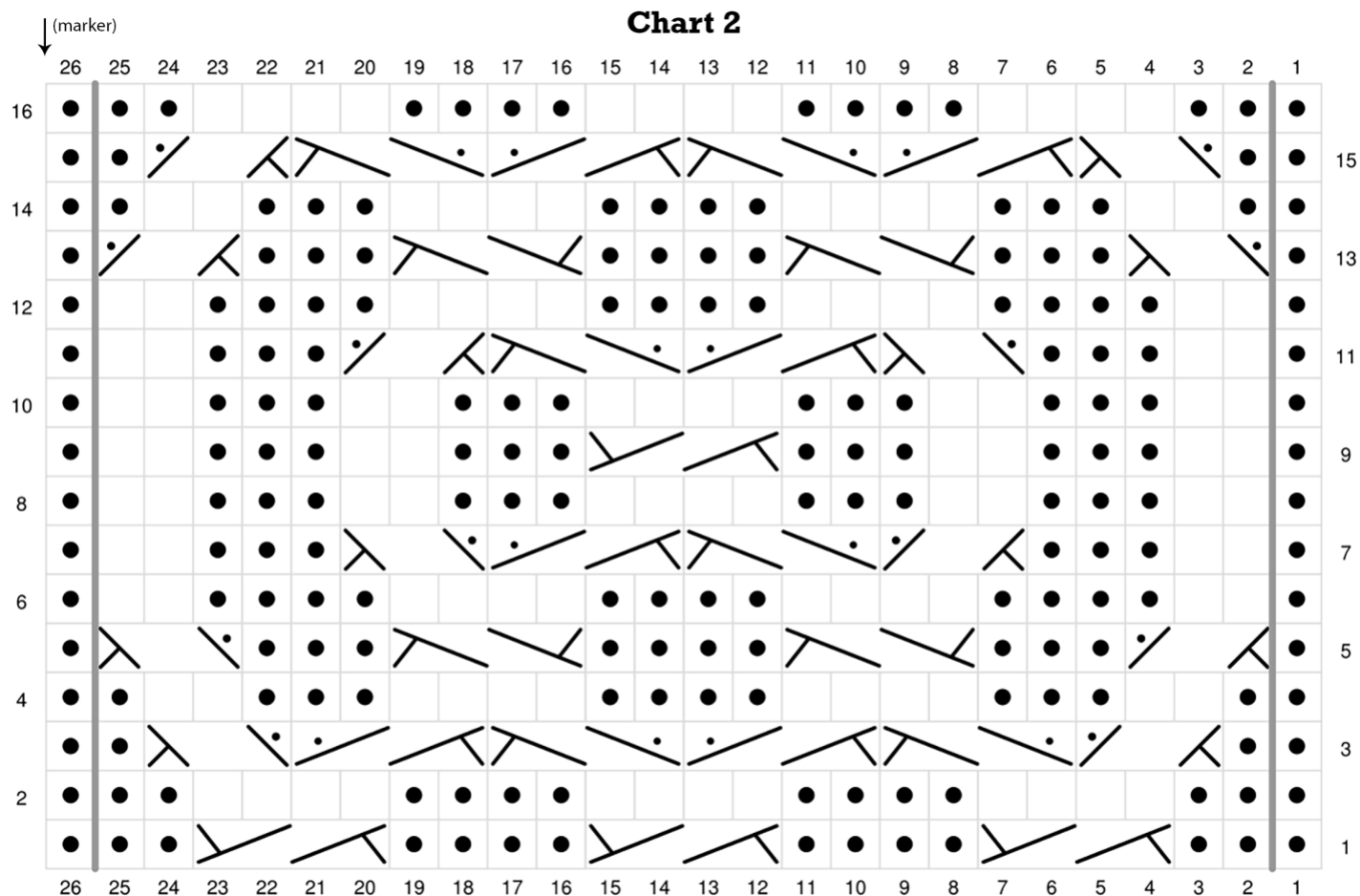
K2, k2tbl, slip all 3 stitches back on to left needle, repeat to last 3 stitches. Pull yarn through remaining 3 stitches and pull tight. Leave a 20" tail for seaming.

Block flat and use mattress stitch to close up the non-i-cord edges. Enjoy your cowl!

Shape and Dimensions







Key: Charts



RS: Knit
WS: Purl



RS: Purl
WS: Knit



No stitch



Cable 4 Front (slip 2 stitches onto cable needle and hold in front, knit 2, knit 2 from cable needle)



Cable 4 Back (slip 2 stitches onto cable needle and hold in back, knit 2, knit 2 from cable needle)



Cable 4 Right (slip 2 stitches onto cable needle and hold in back, knit 2, purl 2 from cable needle)



Cable 4 Left (slip 2 stitches onto cable needle and hold in front, purl 2, knit 2 from cable needle)



Cable 3 Left (slip 2 stitches onto cable needle and hold in front, purl 1, knit 2 from cable needle)



Cable 3 Right (slip 1 stitch onto cable needle and hold in back, knit 2, purl 1 from cable needle)



Make 1 Right



Make 1 Purlwise



Make 1 Cable Left: Place 1 stitch on cable needle and hold in front, purl 2, M1R from cable needle, knit 1 from cable needle (1 st increased)



Make 1 Cable Right: Place 1 stitch on cable needle & hold in back, knit 2, kfb into stitch from cable needle (1 st increased)

Key: Written Instructions

kfbf	knit-front-back-front: knit, knit into the back of the same stitch, knit into the front of the same stitch (2 sts increased)
kfb	knit-front-back: knit, knit into the back of the same stitch
sl(#)wyif	slip stitch(es) with yarn in front
sl(#)wyib	slip stitch(es) with yarn in back
m1r	make 1 right
m1l	make 1 left

